

If you are camping, please . . .

- Choose a site that has already received use, and is located well away from lakes and streams
- Bury human waste in a cat hole 6 to 8 inches deep, at least 200 feet from water sources, or use primitive toilets where provided (Baker and Norton Lakes)
- Use a stove for cooking – if you must build a fire, do so only in an existing ring
- Wash self and dishes well away from lakes and streams
- Pack out all that you pack in

PIONEER CABIN TRAILS



Cover: Looking at the Pioneer Mountains with Pioneer Cabin in the foreground.



PRINTED ON RECYCLED PAPER

23.181.414.08/99
Revised/Reprint 2009

"The U.S. Department of Agriculture (USDA) prohibits discrimination in all its programs and activities on the basis of race, color, national origin, gender, religion, age, disability, political beliefs, sexual orientation, or marital or family status. (Not all prohibited bases apply to all programs.) Persons with disabilities who require alternative means for communication of program information (Braille, large print, audiotape, etc.) should contact USDA's TARGET Center at 202-720-2600 (voice or TDD).

To file a complaint of discrimination, write USDA, Director, Office of Civil Rights, Room 326-W, Whitten Building, 1400 Independence Avenue, SW, Washington DC 20250-9410 or call (202) 720-5964 (voice or TDD). USDA is an equal opportunity provider and employer."



United States
Department of
Agriculture

Forest
Service

Intermountain
Region

Sawtooth
National
Forest

PIONEER CABIN TRAILS



Pioneer Cabin is an enduring legacy to Sun Valley's storied past. Built by the Union Pacific Railroad as a ski hut in 1937, the cabin still provides shelter for spring skiers and a popular lunch spot for summer hikers. Perched at 9,400 feet, the cabin's front steps offer breathtaking views of the Pioneer Mountains. There are two distinctly different loop trails accessing Pioneer Cabin. Hike either of them, or arrange a shuttle and do a portion of each.

From East Fork

Johnstone Creek #206

North Fork Hyndman Creek #165

Distance: 10 miles/16 kms. (loop)

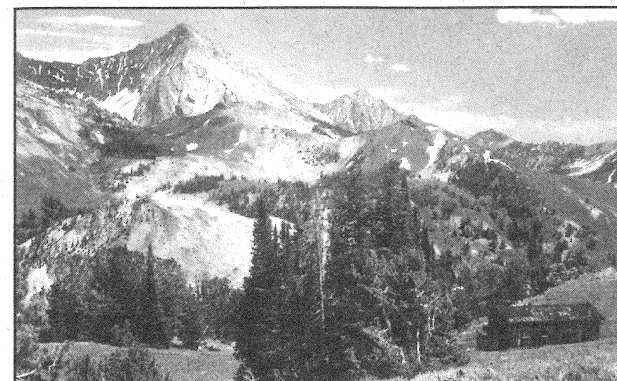


Most Difficult

This scenic loop follows steep canyons through aspen stands and tumbling waterfalls to Alpine basins and high ridges surrounding Pioneer Cabin. The trail is moderately strenuous and offers fine opportunities for solitude. To complete the loop, one must walk one mile along Hyndman Creek Road #203 back to Johnstone Creek Trailhead.

Getting There:

Drive five miles south from Ketchum and turn left (east) onto East Fork Road. At approximately 7 miles, turn left again onto Hyndman Creek Road #203. The hike begins at Johnstone Creek Trailhead, three miles up the road. Road #203 continues another mile to the North Fork Hyndman Creek and Hyndman Creek Trailhead.



From Corral Creek

Pioneer Cabin #122

Long Gulch #123

Distance: 8.5 miles/14 kms. (loop)

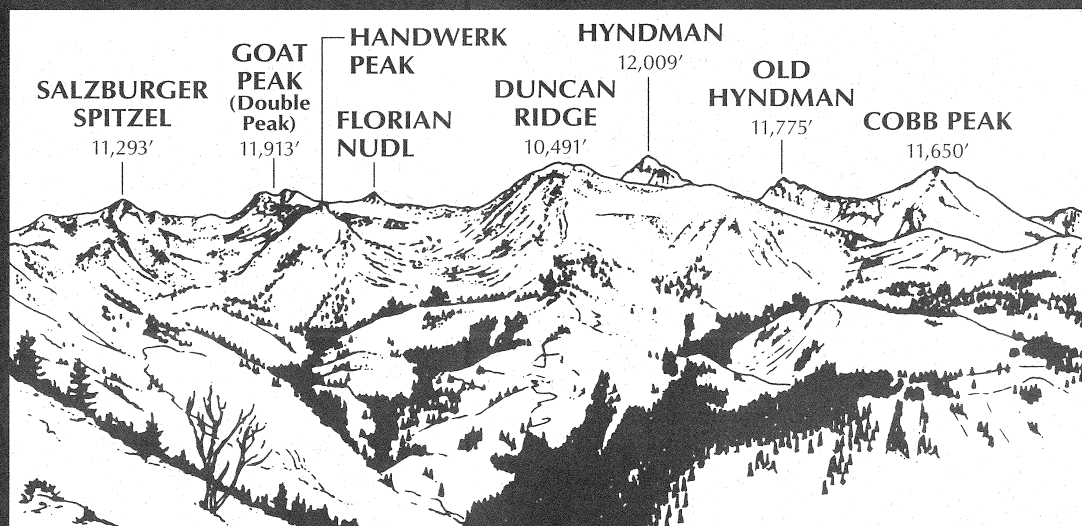


Most Difficult

The recommended route for this rewarding hike is to ascend along Pioneer Cabin Trail #122 and return to your car via Long Gulch Trail #123. The trail climbs through old-growth fir forests to the open ridges surrounding Pioneer Cabin. It descends steeply across Corral Creek Canyon and along the open ridgeline above Long Gulch. Views of the Boulder Mountains along the descent are outstanding. Expect to see other visitors on this hike. Be sure to bring plenty of drinking water with you on this hike..

Getting There:

From Ketchum, take Sun Valley Road five miles to Corral Creek Road #137. Turn right and travel 3.8 miles to the trailhead.



From "Adventures in Idaho's Sawtooth Country," by Lynne Stone. (Published by the Mountaineers Books.)

REMEMBER . . .
Respect the Rights
of Other Trail Users and
LEAVE NO TRACE!