

Content & Overview

Contents Graph

- a. Rolling 6-month view
- b. Static summer view
- c. Static winter view
- d. 60-day advance view

Participating Properties

Sun Valley Resort - Condos	Sun Valley Resort - Hotels	Tamarack Lodge	Hotel Ketchum
Best Western Tyrolean Lodge	Best Western Plus Kentwood Lodge	Knob Hill Inn	Limelight Hotel Ketchum
Alpine Lodging - Sun Valley			

The Daily Occupancy Report tracks occupancy on a daily level of granularity. The report combines the data sets of participating properties into a destination wide view that features three data sets (providing that sufficient information is available) including:

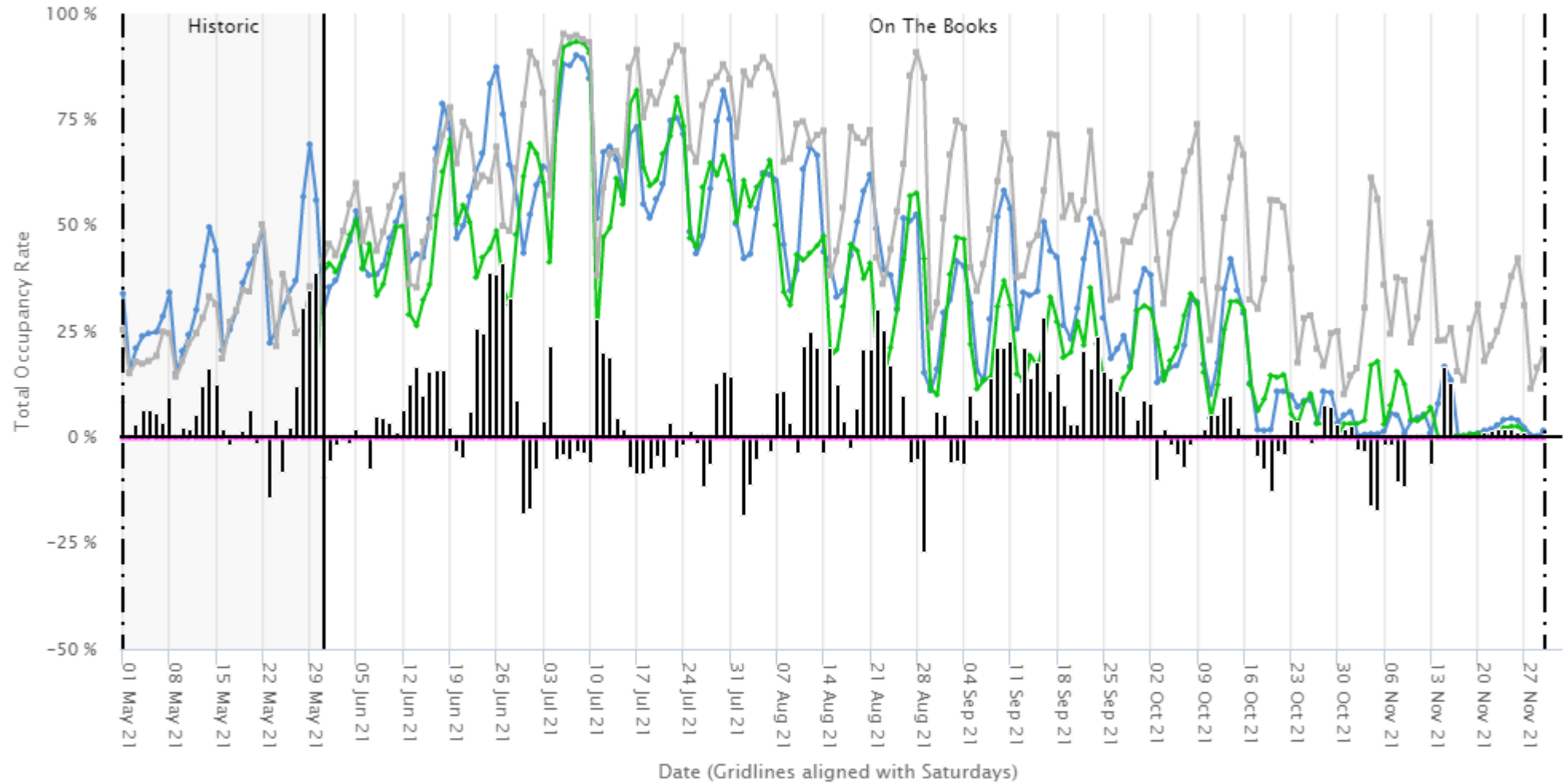
- i) current YTD occupancy,
- ii) last YTD occupancy,
- iii) last season's ending occupancy.

The Daily Outlook Report is generated on a monthly or twice-monthly basis, usually for a 12 month subscription period, and is created from data provided by a group of properties participating in a cooperative manner,

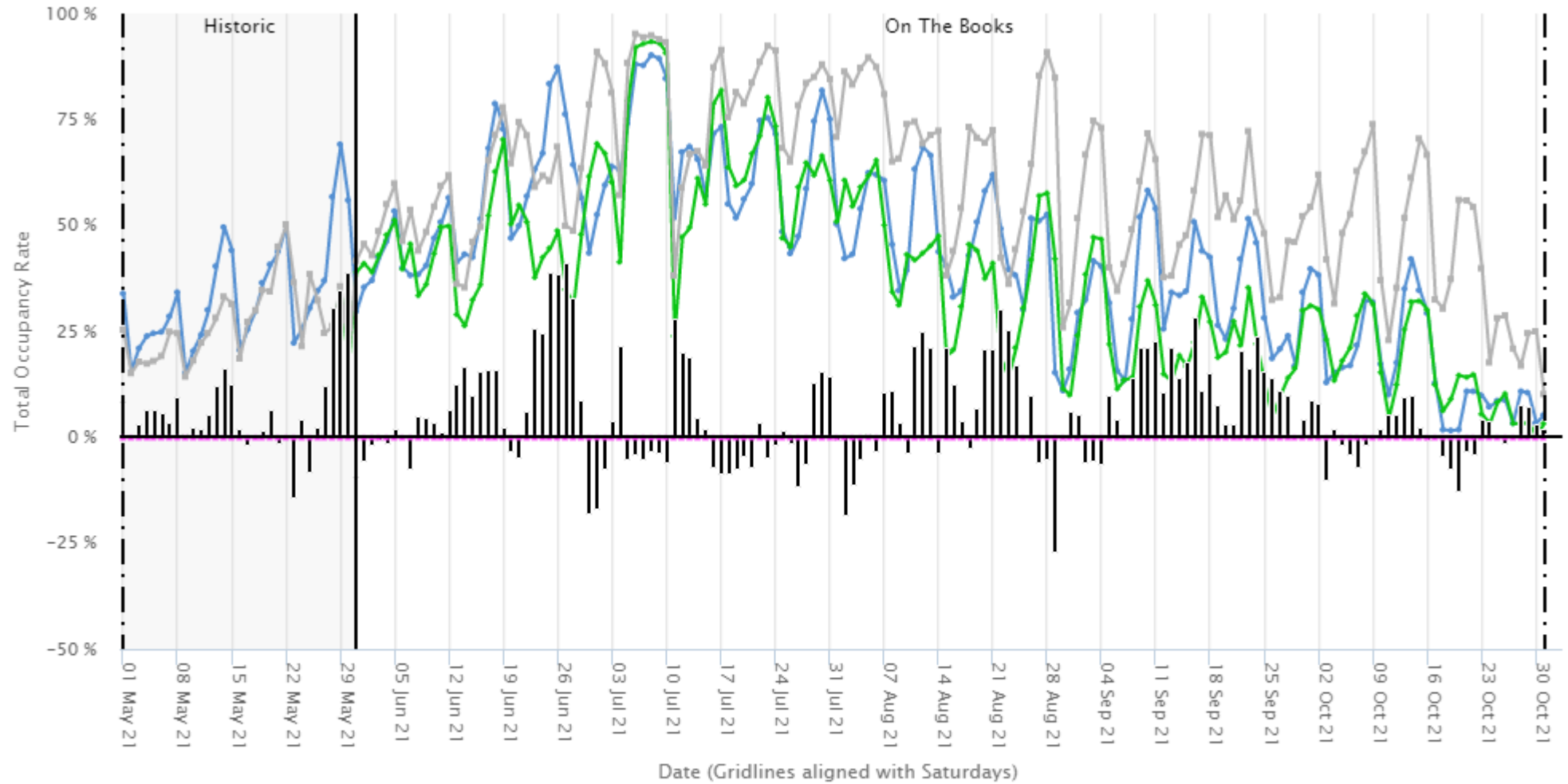
As is the case in all Inntopia data, all information provided by individual properties is strictly confidential, except when aggregated with other data and indistinguishable as a result.

© 2021 Sterling Valley Systems, Inc. All rights reserved. No parts of this work may be reproduced in any form or by any means, graphic, electronic or mechanical, including photocopying, recording, taping or information storage and retrieval systems - without the written permission of the copyright holder. Products that are referred to in this document may be either trademarks and/or registered trademarks of the respective owners. The publisher and the author make no claim to these Trademarks. While every precaution has been taken in the preparation of this document, the publisher and the author assume no responsibility for errors or omissions, or for damages resulting from the use of information contained in this document or from the use of programs and source code that may accompany it. In no event shall the publisher and the author be liable for any loss of profit or any other commercial damage caused or alleged to have been caused directly or indirectly by this document.

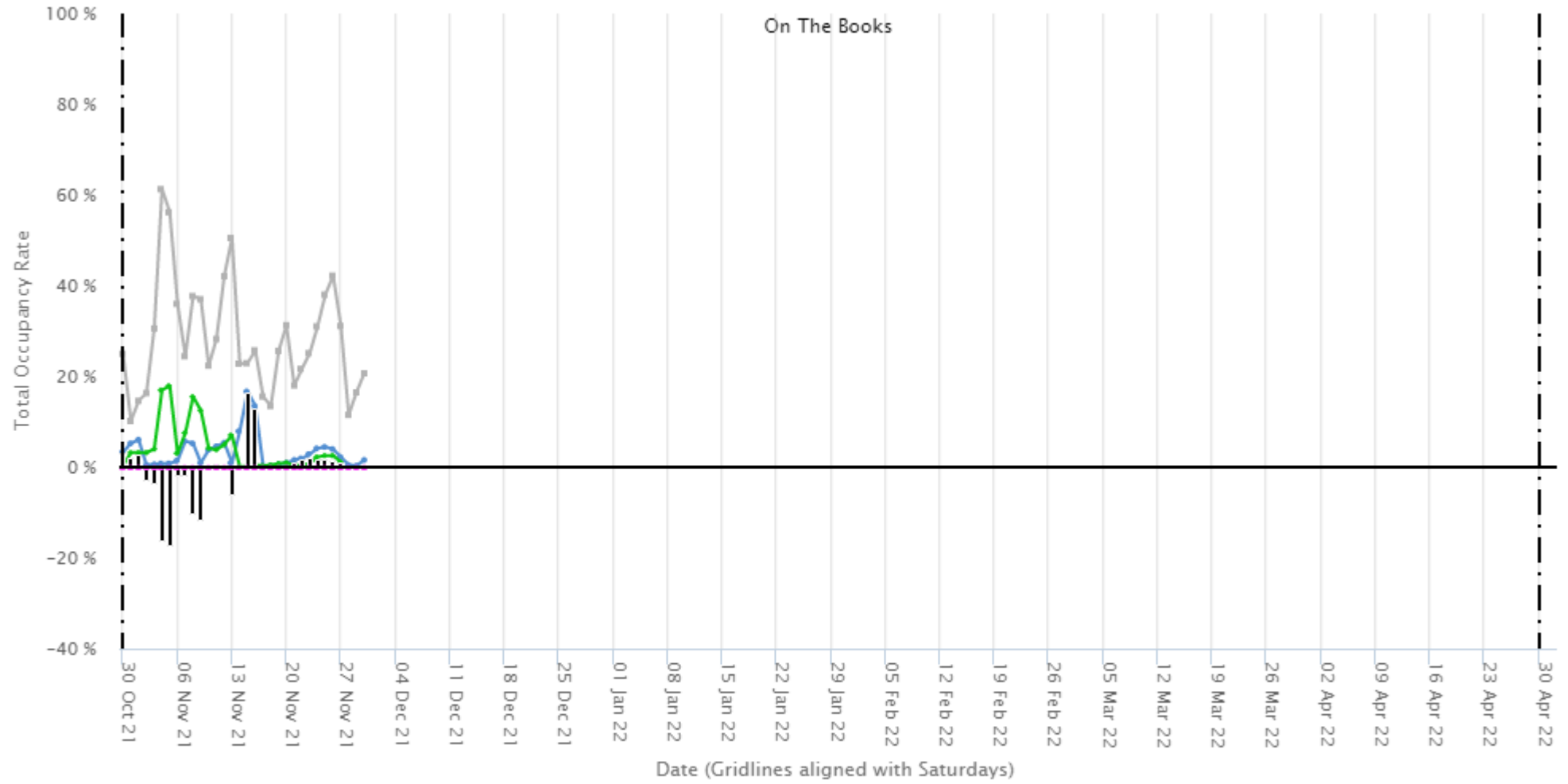
DestiMetrics



— Data as of May 31 (2020/21) 9 properties
 — Data as of May 31 (2018/19) 9 properties
 — Historic Actual (2018/19)
 ■ % Occupancy change
— % Occupancy change as of last period



— Data as of May 31 (2020/21) 9 properties
 — Data as of May 31 (2018/19) 9 properties
 — Historic Actual (2018/19)
 ■ % Occupancy change
— % Occupancy change as of last period



— Data as of May 31 (2020/21) 9 properties
 — Data as of May 31 (2018/19) 9 properties
 — Historic Actual (2018/19)
 ■ % Occupancy change
— % Occupancy change as of last period

DestiMetrics

